

Meet the teachers!

Elm and Birch



Year Two- Staff



Expectations



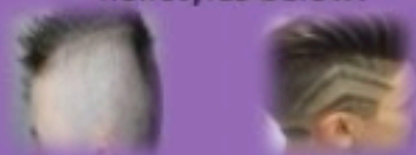
- In Year 2, we encourage children to become independent within their learning and take more responsibility for their belongings and learning preparing them for Key Stage 2.
- We have a big push on reading in Year 2 and your support at home is greatly appreciated as well as daily guided reading in class, daily reading, precision teaching of high frequency words.
- Interventions will be put in place for children who may be struggling to give them as much support to boost confidence and progress.

BOUNDARY'S UNIFORM POLICY

Hairstyles

At Boundary we encourage smart uniform and smart hairstyles.

Extreme styles and cuts (Mohicans), patterns or hair dye are not allowed e.g. the hairstyles below:



Hair longer than shoulder length should be tied back.

Jewellery

One pair of stud earrings may be worn in the ear lobe and must be removed before PE.

Please have any new ear piercing during the Summer holiday.



Always Badges

Pupils are expected to wear their 'Always' badge every day as part of their uniform.

All children are provided with a badge in September. Replacements will cost 50p. Please keep in a safe place or leave at school.

School Shoes

Shoes must be ALL black

Trainers of any colour, including black, are not acceptable
School shoes must be safe and sensible and appropriate for all weathers

Our Uniform

Purple jumper or cardigan with school logo
White shirt
Boundary Tie



Plain grey trousers, skirt
or grey uniform shorts (optional for Summer)
A purple gingham dress (optional in summer)
Plain black, grey or white coloured socks with no patterns

A warm, waterproof coat should be brought to school in case of rain and/or cold temperatures

Children are expected to wear full school uniform every day.
Full PE kits should be in school on PE days.

Please check with your child's classteacher when PE days are.



Acceptable



Not Acceptable



Children who do not wear the correct shoes will be provided with black pumps to wear during the school day.

At Boundary, we expect our pupils to wear full school uniform at all times to promote positive attitudes to learning while ensuring a sense of personal pride in our school.

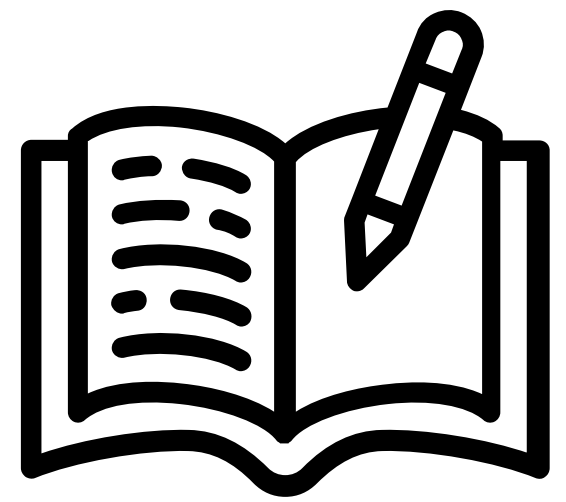
If you are finding any difficulties in providing the correct uniform for your child, please contact the school office or Mrs. Bradley (Engagement Officer).

PE Kits

White t-shirt
Black shorts
Black pumps or trainers

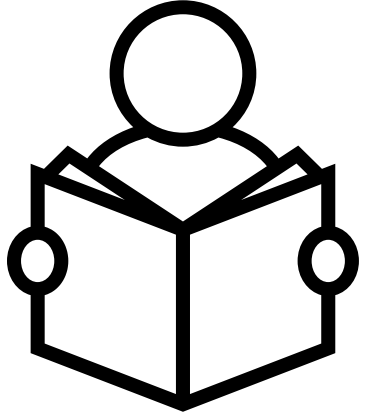
Please remember all school clothing should be clearly labelled with your child's name

Homework



- Alongside the half termly BLT, children will be set weekly Maths and English homework. This will be set via Spelling Shed, Maths Shed and Spag.com. Login details can be found in the front of your child's reading record.
- Children are expected to complete homework. BLT can be returned either weekly or at the end of a half term. Weekly homework will be set by a Friday and returned following Friday.
- Spellings will go home on a Friday and be collected by the following Friday. Children will be tested on these spellings on a Friday afternoon and they should practise these on Spelling Shed.

Reading at home



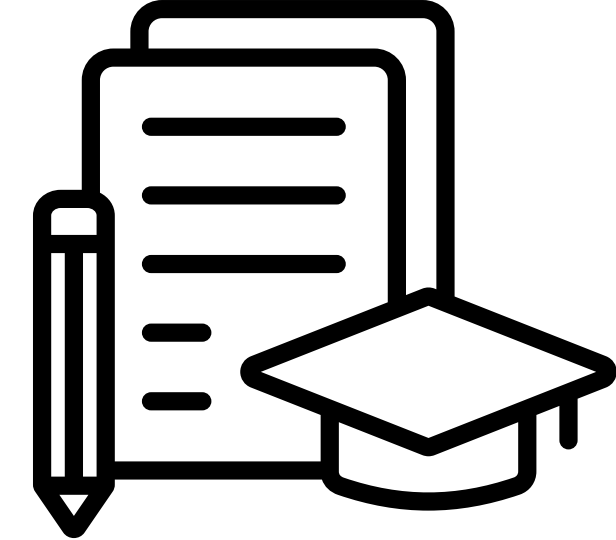
- Children are expected to bring their reading book every day and will be responsible for placing it in the box.
- We will check daily for who has read the book and change accordingly. When signing the reading diary please can you state how much of the book has been read so that staff know if it needs changing.
- The expectation is that children read a minimum of 3 times a week to an adult at home and get their reading record signed.
- To become a reading champion your child needs to show an enjoyment in reading, reads on a regular basis and makes good progress.
- Reading is the most important element of learning at a young age as it helps them in all areas of the curriculum.

P.E



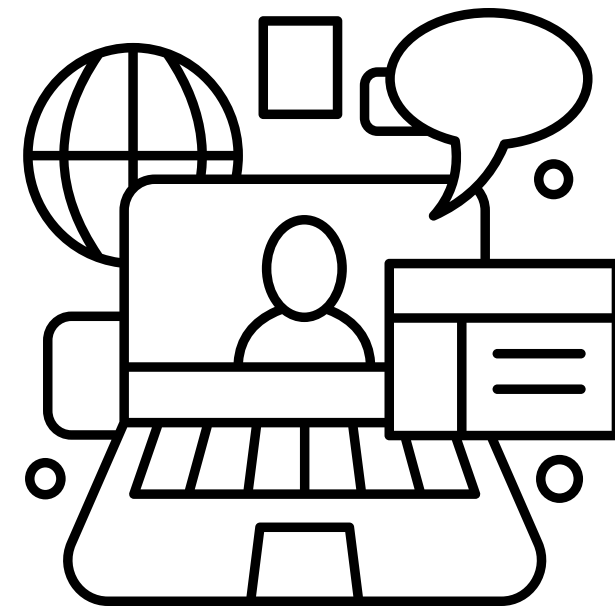
- PE for Autumn 1 is Monday and Tuesday.
- Please make sure your child has a full PE kit in School to be kept in lockers and we will send home to be washed at the end of the half term. This is best as occasionally PE days can change.
- Children must have earrings removed on these days to ensure everyone is safe.

Curriculum



TERM	Reading into Writing	Mathematics	Subject Focus 1	Subject Focus 2	Science	Physical Education	Religious Education	Languages	PSHE	Music
Autumn 1 Class Book: Fantastic Mr Fox Visit/Visitor: Forest School	Sentence Structure/GPS focus Diary Entry- linked to BHM	Place Value Time	Design Technology Textiles	Computing - Digital photographs	Use of Everyday Materials	Gymnastics- Travelling and rolling Dance	Christianity - God - Does how we treat the world matter?	French - hello, numbers, in daily classroom life	Healthy Lifestyles Growing and Changing Feelings and Emotions Healthy Relationships Rights and Responsibilities	Pulse, rhythm and pitch
Autumn 2 Class Book: Charlie and the chocolate factory Visit/Visitor: Fire Service	Story as a theme Letter from a trench (linked to History)	Addition and Subtraction	History Remembrance	Art - Expressive Painting	Animals Including Humans Seasonal Changes	Fundamental Skills - Net and Wall games Fundamental Skills - Throwing, Catching, Running and Jumping	Christianity - Jesus - Why do Christians say that Jesus is the light of the world?	French - hello, numbers, in daily classroom life	Keeping Safe Healthy Relationships Valuing Differences Feelings and Emotions	BBC Little Red
Spring 1 Class Book: The Twits Visit/Visitor: Dan Worsley	Animal Adventure Stories (linked to LGBTQ+)	Shape Money	Geography Continents and Oceans	Design Technology Food	Living things and their habitats	Fundamental Skills - Invasion games Yoga	Hindu Dharma - How might people express their devotion?	French - hello, numbers, in daily classroom life	Keeping Safe Feelings and Emotions Growing and Changing Money Healthy Relationships	Inventing a Musical Story
Spring 2 Class Book: James and the Giant Peach Visit/Visitor: Forest School, Blackpool Zoo	Non-Chronological Report (Linked to Science) Poems with a structure - riddles	Multiplication and division Fractions	History Mary Seacole	Design Technology Mechanisms Art- Stick transformation- Block day (soldier linking to History)	Blackpool Zoo Seasonal Changes	Dance Fundamental Skills - Striking and Fielding	Islam - Why do Muslims think it is important to obey God?	French - hello, numbers, in daily classroom life	Rights and Responsibilities Keeping Safe Valuing Differences	Inventing a Musical Story
Summer 1 Class Book: George's Marvellous Medicine Visit/Visitor: Church Visitor Islam Visitor	Fairytales with a twist Instructions (linked to Design Technology)	Length and Height Mass, capacity and temperature	Computing Programming and Algorithms Floor Robots	Art Drawing Draw and Explore	Electricity	Athletics Gymnastics - Travelling and rolls	Christianity - The Church - What unites the Christian community?	French - hello, numbers, in daily classroom life	Healthy Lifestyles Rights and Responsibilities	Exploring Improvisation
Summer 2 Class Book: Matilda Visit/Visitor:	Persuasive Advert (linked to Geography) Classic Poetry (Choral Speaking)	Statistics Position and Direction	Geography Hot and Cold Places	Computing - Data and Information - Pictograms	Plants Seasonal Changes	Fundamental Skills- Mastery of the 7 fundamentals Fundamental Skills - Invasion Games	Judaism - What aspects of life really matter?	French - hello, numbers, in daily classroom life	Healthy Relationships Keeping Safe Rights and Responsibilities	Exploring Improvisation

ICT Code of conduct/GDPR



- If you have any questions please feel free to ask. We will be around now for 1:1 conversations.
- If any queries throughout the year, we can be contacted by appointment made through the office, phone call to the office and I will get back to you as soon as possible or via the class email:

birchteacher@boundary.blackpool.sch.uk

elmteacher@boundary.blackpool.sch.uk